

RECOMMENDATIONS FOR SELECTING THE MOST REPRESENTATIVE BLOCK

Select the paraffin-embedded tumor block with the greatest amount of invasive breast carcinoma that is morphologically consistent with the submitting diagnosis.

- A. Choose the one block with both the greatest amount/area of invasive breast carcinoma/associated stroma and the least amount of non-invasive mammary epithelium (*in situ* carcinoma, hyperplastic epithelium, normal epithelium). Focal or microinvasive breast cancer alone is not sufficient.
- B. These criteria may be similar to those used when selecting a block for immunohistochemistry (i.e., ER, PR, HER2).
- C. Hemorrhage, necrosis, and adipose tissue do not need to be minimized. They contain little RNA and thus do not significantly impact this assay.
- D. A pathologist at Genomic Health will review the submitted H&E slide for consistency with clinical trial experience.

SATISFACTORY SPECIMENS

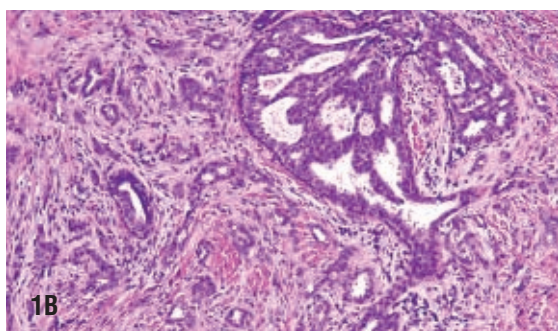
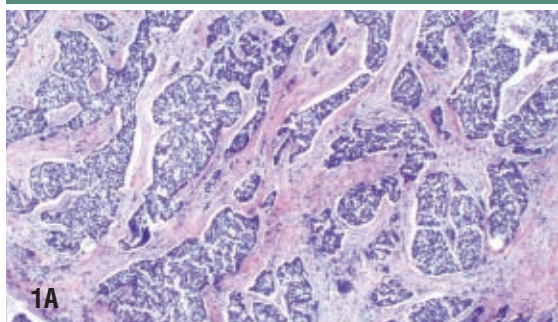


Figure 1A. The invasive carcinoma comprises the majority of the tissue section (> 50% of total epithelium).

Figure 1B. The invasive carcinoma infiltrates around foci of ductal carcinoma in situ requiring manual microdissection by GHI pathology (< 50% of the total epithelium). (H&E A x40 and B x100)

UNSATISFACTORY SPECIMENS

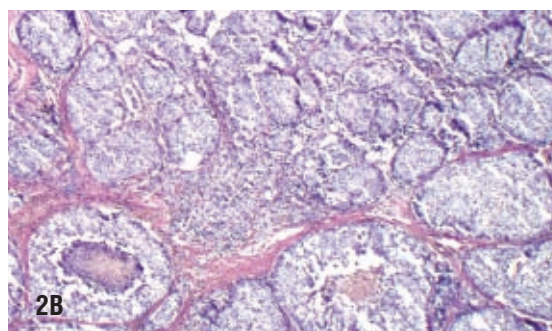
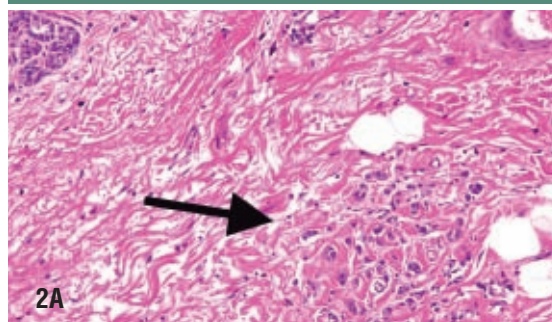


Figure 2A. There is a microscopic focus of lobular carcinoma (indicated by arrowhead) in the lower right half of the figure which constitutes a very small percentage of the overall epithelial component (< 5% of the total epithelium).

Figure 2B. There is a focus of microinvasive carcinoma arising in a background of ductal carcinoma in situ which constitutes a very small percentage of the overall epithelial component (< 5% of the total epithelium). (H&E A x400 and B x40)

SPECIMEN PREPARATION INSTRUCTIONS FOR SECTIONS

1. Materials and Equipment

- A. Fixed paraffin-embedded (FPE) breast cancer tissue block
- B. *Oncotype DX*[®] Specimen Collection and Transportation Kit (“*Oncotype DX*[®] Specimen Kit”)
- C. *Oncotype DX*[®] Breast Cancer Assay Requisition Form (“*Oncotype DX*[®] Requisition Form”)

NOTE: Use only the microcentrifuge tubes provided in the *Oncotype DX*[®] Specimen Kit. Follow your laboratory’s standard practice guidelines for the processing of FPE tissue.

2. Place 3 sections of tissue into each microcentrifuge tube (two tubes total) using a microtome depth setting of 10 µm.

- A. To minimize cross-contamination between specimens (blocks) when sectioning, be sure to use a new area of the blade.
- B. Apply the S barcode label from the *Oncotype DX*[®] Specimen Kit inner top lid lengthwise on each microcentrifuge tube. (See Figure 3)
- C. When finished, place both tubes in the small plastic bag and seal the bag.

3. Prepare an H&E slide using a microtome depth setting of 4 or 5 µm.

- A. We recommend that the H&E section is cut after the sections are cut for the microcentrifuge tubes (i.e., the final section cut from the block).
- B. Write the Specimen ID on the “frosted” end of the slide using your standard procedure; leave room to place the Genomic Health S barcode on the slide after it is stained. (See Figure 3)
- C. After H&E staining is complete, place the S barcode label on the slide.
- D. Allow the mounting media to dry before placing it in the provided slide carrier.

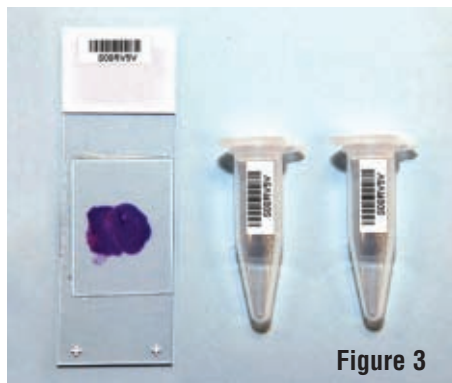


Figure 3

REIMBURSEMENT: Genomic Health is prepared to bill insurance plans directly on behalf of insured patients in the US whose physicians order the *Oncotype DX*[®] Assay.

4. Complete the *Oncotype DX*[®] Requisition Form.

- A. One *Oncotype DX*[®] Specimen Kit and Requisition Form should be completed for each patient and for each primary tumor. Extra S barcode labels should be left in the *Oncotype DX*[®] Specimen Kit box and should NOT be used for another patient/primary tumor.
- B. Before shipping, make a copy of the *Oncotype DX*[®] Requisition Form and retain it for your records.

5. Place the tubes (2) into the small containment bag from the *Oncotype DX*[®] Specimen Kit.

6. Place the slide container and small containment bag, with tubes, inside the foam block located in the *Oncotype DX*[®] Specimen Kit box.
7. Place the *Oncotype DX*[®] Requisition Form and relevant patient insurance materials in the *Oncotype DX*[®] Specimen Kit, between the box and the large secondary containment bag.
8. Seal the large secondary containment bag and close the box using the tab.

DOMESTIC SHIPPING INSTRUCTIONS

1. Materials and Equipment

- A. *Oncotype DX*[®] Specimen Kit containing the patient specimen and *Oncotype DX*[®] Requisition Form
- B. FedEx[®] USA Airbill pre-printed with Genomic Health shipping information or the Billable FedEx[®] Stamp
- C. FedEx[®] Clinical Pak, Large — a plastic overwrap used to ship the specimen to Genomic Health
- D. FedEx[®] adhesive outer sleeve for the FedEx[®] Airbill. This is not needed for the Billable FedEx[®] Stamp

NOTE: To order additional kits and/or requisition forms, e-mail Customer Service at customerservice@genomichealth.com or call 1-866-ONCOTYPE (1-866-662-6897).

2. Place the *Oncotype DX*[®] Specimen Kit into the FedEx[®] Clinical Pak.

3. Check the box on the Clinical Pak indicating that the packaging is in compliance with IATA 650 packaging regulations. Genomic Health has designed the *Oncotype DX*[®] Specimen Kit to comply with these packaging regulations.

4. Complete the FedEx[®] USA Airbill/Billable FedEx[®] Stamp as follows:

- A. Section 6. Special Handling: Under the question, “Does this shipment contain dangerous goods?”, please check “No.” The fixed paraffin-embedded (FPE) specimen is noninfectious; thus, it is not classified as a dangerous good.
- B. Release Signature: Do not sign here.

5. Place the package in the designated FedEx[®] pickup location at your site.

6. If your site does not have standard FedEx[®] pick up, please call 1-800-GO FEDEX (1-800-463-3339) to arrange for pick up.

NOTE: For international specimens, please call 001-650-556-9300, press option 1 to speak with a company representative or visit www.oncotypedx.com.

QUESTIONS? PLEASE CALL 1-866-ONCOTYPE (1-866-662-6897).